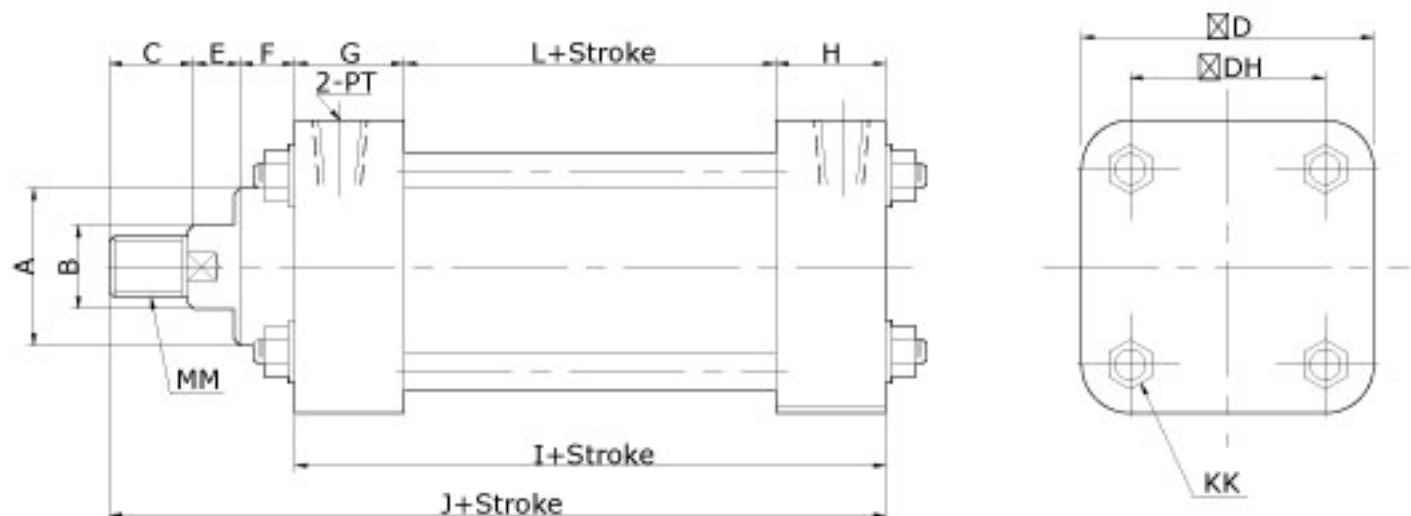


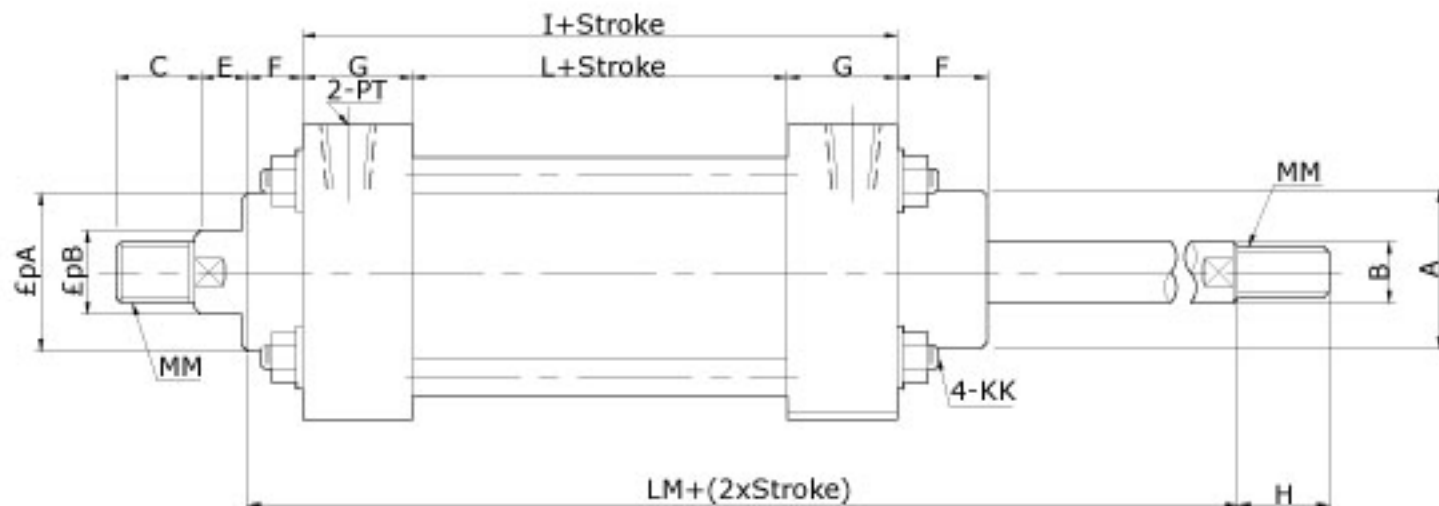
CLHS



Dimensional Table

Mark Bore	A	B	MM	C	E	F	G	H	L	I	J	⊠D	⊠DH	KK	PT
φ30	30	16	M14xP1.5	25	12	15	26	28	50	104	156	52	35	M8xP1.25	1/4
φ40	40	20	M16xP1.5	27	15	20	30	28	50	108	170	65	45	M8xP1.25	3/8
φ50	45	20	M16xP1.5	27	18	20	32	34	50	116	181	70	51	M10xP1.25	3/8
φ63	55	25	M22xP1.5	38	20	30	32	34	50	116	204	86	60	M10xP1.25	3/8
φ80	62	30	M26xP1.5	40	20	32	38	40	55	133	225	107	75	M12xP1.5	1/2
φ100	78	35	M30xP2.0	43	20	32	38	40	75	153	248	123	89	M14xP1.5	1/2
φ125	85	50	M40xP2.0	53	24	32	42	44	80	166	275	148	112	M16xP1.5	1/2
φ150	110	60	M50xP2.0	55	28	40	50	52	90	192	315	190	145	M18xP1.5	3/4

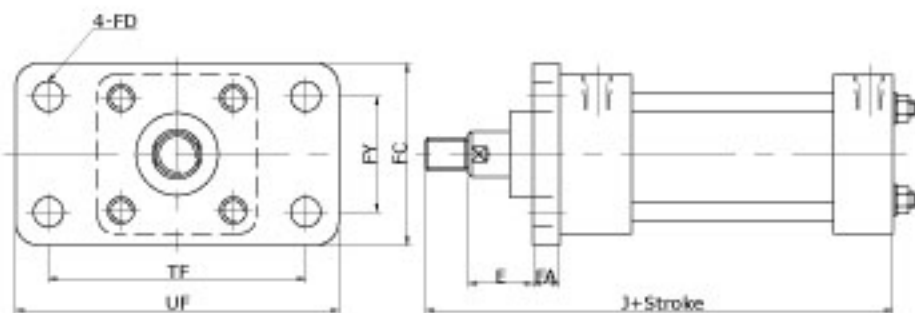
CLHD



Dimensional Table

Mark Bore	A	B	MM	C	E	F	G	L	I	LM	H	KK	PT
φ30	30	16	M14xP1.5	25	12	15	26	50	102	156	50	M8xP1.25	1/4
φ40	40	20	M16xP1.5	27	15	20	30	50	110	180	54	M8xP1.25	3/8
φ50	45	20	M16xP1.5	27	18	20	32	50	114	190	54	M10xP1.25	3/8
φ63	55	25	M22xP1.5	38	20	30	32	50	114	214	76	M10xP1.25	3/8
φ80	62	30	M26xP1.5	40	20	32	38	55	131	235	80	M12xP1.5	1/2
φ100	78	35	M30xP2.0	43	20	32	38	75	151	255	86	M14xP1.5	1/2
φ125	85	50	M40xP2.0	53	24	32	42	80	164	276	106	M16xP1.5	1/2
φ150	110	60	M50xP2.0	55	28	40	50	90	190	326	110	M18xP1.5	3/4

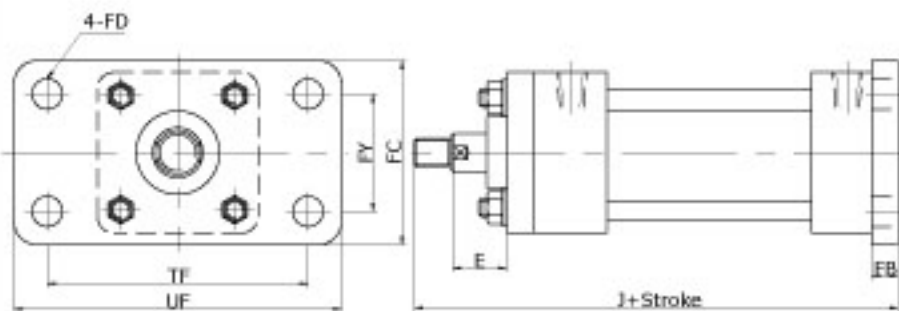
FA - Front flange(CLH)



Dimensional Table

Bore	Mark	E	FA	J	UF	TF	FC	FY	FD
φ30		12	12	156	82	107	55	35	9
φ40		15	12	170	95	117	73	45	12
φ50		18	12	181	95	117	73	50	12
φ63		20	14	204	118	142	88	60	14
φ80		20	20	225	152	182	108	75	14
φ100		20	20	248	160	202	108	89	18
φ125		24	20	275	186	227	155	112	22
φ150		28	23	315	232	277	200	150	27

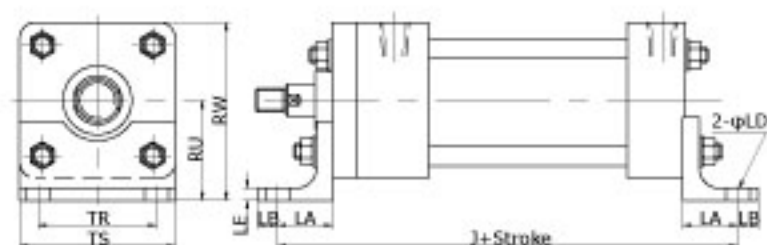
FB - Rear flange(CLH)



Dimensional Table

Mark	E	FB	J	UF	TF	FC	FY	FD
φ30	12	12	168	82	107	55	35	9
φ40	15	12	182	95	117	73	45	12
φ50	18	12	193	95	117	73	50	12
φ63	20	14	218	118	142	88	60	14
φ80	20	20	245	152	182	108	75	14
φ100	20	20	268	160	202	108	89	18
φ125	24	20	295	186	227	155	112	22
φ150	28	23	338	232	277	200	150	27

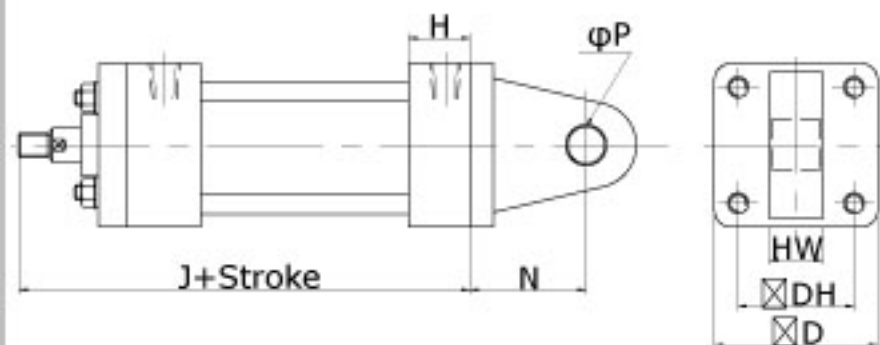
LB - Foot mouting(CLH)



Dimensional Table

Mark Bore	J	LA	LB	LE	LD	TR	TS	RU	RW
φ30	158	27	11	5	10	35	52	36	62.0
φ40	182	37	12	6	10	45	65	46	78.5
φ50	190	37	12	6	12	50	70	46	81.0
φ63	190	37	12	6	12	60	86	54	97.0
φ80	203	35	14	6	14	75	107	62	115.5
φ100	253	50	24	9	17	89	123	80	141.5
φ125	266	50	24	9	18	112	148	88	162.0
φ150	292	50	24	9	20	145	190	110	205.0

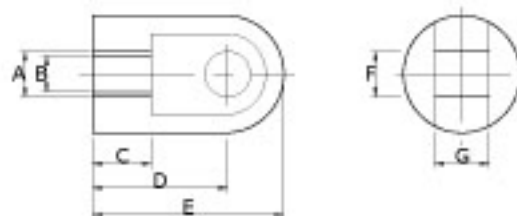
CA - Male Pivot (CLH)



Dimensional Table

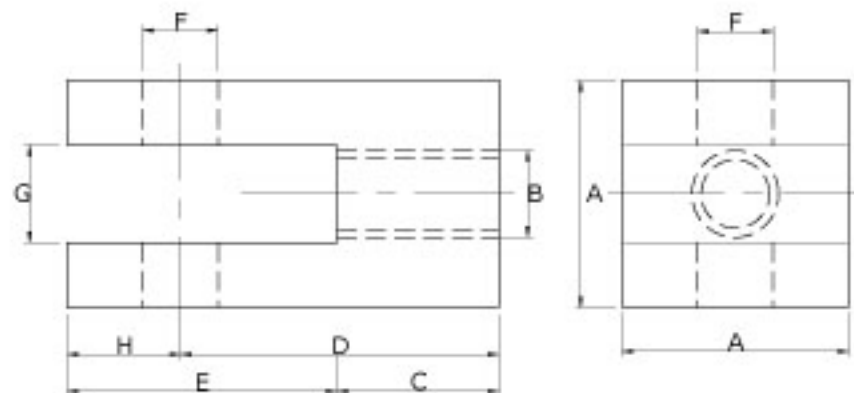
Mark	I	J	N	P	R	$\boxtimes D$	$\boxtimes DH$	HW
$\phi 30$	104	184	30	12	12	52	35	10
$\phi 40$	108	207	37	12	13	65	45	22
$\phi 50$	116	218	40	12	13	70	51	22
$\phi 63$	116	254	50	20	24	86	60	30
$\phi 80$	133	290	65	30	30	107	75	30
$\phi 100$	153	318	75	35	35	123	89	35
$\phi 125$	166	350	80	35	38	148	112	35
$\phi 150$	192	405	90	40	40	190	145	40

I CONNECTOR - CLH



Mark Bore	A	B	C	D	E	F	G
φ30	25.4	M14xP1.5	25	58	74	12	25.4
φ40	25.4	M16xP1.5	25	58	74	12	25.4
φ50	25.4	M16xP1.5	25	58	74	12	25.4
φ63	32	M22xP1.5	35	60	80	20	32
φ80	50	M26xP1.5	40	85	115	30	30
φ100	60	M30xP2.0	40	85	115	35	35
φ125	75	M40xP2.0	40	90	130	35	45
φ150	80	M50xP2.0	45	105	145	40	55

Y CONNECTOR - CLH



Mark Bore	A	B	C	D	E	F	G	H
φ30	44	M14xP1.5	36	56	34	12	16	14
φ40	44	M16xP1.5	36	56	34	12	16	14
φ50	44	M16xP1.5	36	56	34	12	16	14
φ63	52	M22xP1.5	38	70	55	20	24	23
φ80	50	M26xP1.5	35	75	70	30	25	30
φ100	60	M30xP2.0	40	85	75	35	32	30
φ125	70	M40xP2.0	47	93	80	35	32	34
φ150	80	M50xP2.0	50	105	100	40	35	45